

At your service worldwide



China

Henschel, Shanghai
Phone: +86 21 6469 7696
chn@henschelgroup.de

Egypt

Henschel, Giza
Phone: +20 233 88 20 00
egy@henschelgroup.de

Germany

Henschel, Kassel
Phone: +49 561 801 6118
antriebstechnik@henschel.de

Henschel, Heilbad Heiligenstadt
Phone: +49 3606 60736 0
fertigungstechnik@henschel.de

Great Britain

Henschel, Nottingham
Phone: +44 115 9753655
gbr@henschelgroup.de

India

Henschel, Ahmedabad
Phone: +91 79 25620953
ind@henschelgroup.de

Henschel, New Delhi
Phone: +91 11 47637300
ind@henschelgroup.de

Italy

Henschel, Milano
Phone: +39 02 48952242
ita@henschelgroup.de

North America

Henschel, Akron, OH
Phone: +1 330 174 0075
usa@henschelgroup.de

South Korea

Henschel, Seoul
Phone: +82 31 4730453
kor@henschelgroup.de

Taiwan

Henschel, Taipei
Phone: +886 2 27731885
twn@henschelgroup.de

HENSCHEL



Henschel GmbH
Henschelplatz 1, 34127 Kassel, Germany
Phone: +49 561 801 5960
henschel@henschel.de

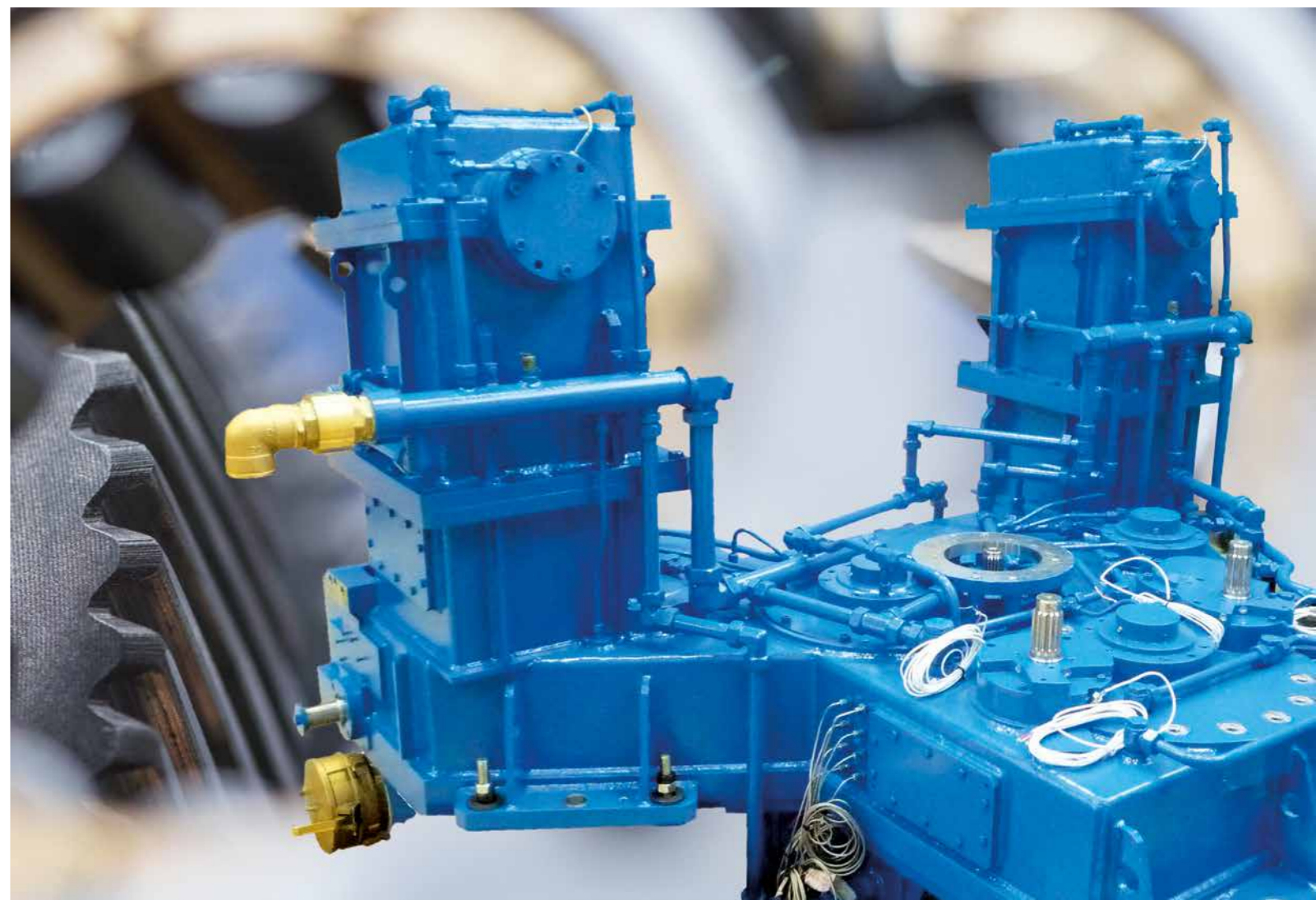
www.henschel.de

HENSCHEL



Excellence in Power Transmission Technology

DURUHIT 2015-04
The individual details given in this publication are to be regarded as guaranteed qualities if they are
individually and in each case expressly confirmed to be so in writing.



Railway Gears | Extrusion Gears | **Special Gears** | Melt Pumps | Couplings | Components | Service

DURUHIT®

Reliable | Intelligent | Efficient

Tailor-Made Gearboxes with Tradition

Henschel, a company with a long-standing tradition, was founded in Kassel in 1810, their activities in building gearboxes started 1918.



In the beginning the production range of gearboxes has covered the requirements of Henschel's own product portfolio. In the meantime the gearbox division of Henschel has grown to become the leading gearbox manufacturer with a focus on tailor-made solutions.

Henschel gearboxes are used worldwide for a variety of applications and are a synonym for quality, reliability and performance. In many areas Henschel is seen as the trendsetter of the industry.

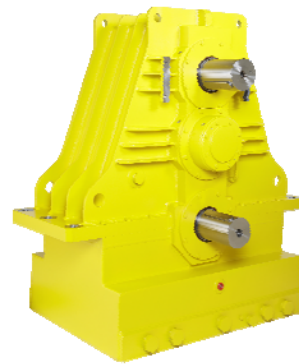


Priority has been set for efficiency and reliability, yet keeping economy of scale as the highest priority. Our quality standards and the close relationships with our customers made us a safe, worldwide acknowledged partner. Henschel stands for power, innovation and top-notch quality project engineering and products. Our gearboxes are constantly improved and developed to set the standards and objectives for the future.

DURUHIT® Gearboxes for individual Drive-Solutions

DURUHIT® special gearboxes, are in use for widely different applications, under the roughest conditions and are a guarantee for quality and reliability. They are applied in all areas of mechanical power engineering and are used as power transmitters, speed reducers and/or rotation changers.

DURUHIT® gearboxes are developed in close cooperation with the customer as special design. They are tailor-made for every definite application. The technical details for the gearbox's dimensions are determined together with the gear-box's design and the possible need for additional equipment. Complete power transmission systems originate from DURUHIT® gearboxes through the adding of gearbox stages, prime movers, brakes, lubrication systems, electric control systems, etc. developed with one partner. This means for the customer the need for less telephone calls and to be relieved from coordination and adaptation hustle which is costing time and money. Optimum drive solutions can be developed for new systems and existing drive concepts can be optimised.



Gearboxes for Special-Purpose



Custom made gearboxes for different types of test-stands are our daily business.

We develop our gear units in close co-operation with the customer's R+D department.

Design topics: Low space requirements, low noise, long lifetime, suitable coupling system, safe sealing system a.s.o

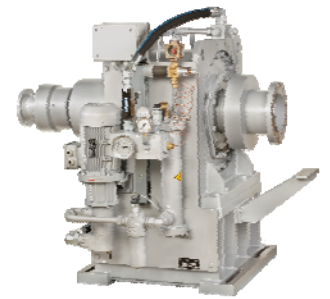
Example: Axle test stand for a truck drive train.

High Speed Gearboxes for Vehicle Motor Test Benches

Henschel is the specialist for efficient custom built gearboxes for high speeds.

In racing or Hybrid Testing our high-speed test stand gearboxes ensure that our customers teams are at the pole position. Test stand trials at maximum speed, probing the power limits are imperative for the permanent development of car power trains.

Extreme precise, high quality gearing and special bearings adapted to the high speed and high loads provide smooth, malfunction-free operation.



Gearboxes for Helicopter Test Benches

The main points in the aircraft industry are safety and reliability. For the test equipment of helicopter test benches Henschel is applying their vast experience, based on a long tradition.

The extremely high requirements of Helicopter Power Trains have to be tested in a dependable way at highest levels.



Gearboxes for Oil- and Gasexploration



Custom made gearboxes for special applications - utilizing Henschel's experience to built the perfect drive solution:

Top Drive Helical Gearboxes for Offshore Rigs

The Top Drive Gearbox Series is designed for the rough conditions on land and offshore platforms. It's transferring the motor power to the auger, simultaneously holding the drilling rods in place.

Winch Drive for Oil Drilling Platform - Operating under extreme conditions

Henschel has designed a special gearbox for drilling rigs. It's equipped with a stand alone lubrication unit, as one option with heating devices to ensure precises operation worldwide. The heavy duty winch drive covers two different operation conditions:

Drilling: Supporting the mass of the drill pipes during the drilling process.

Quick pulling, to remove the pipes from the bore hole

Technical data:

Feed Off:	2-stage planetary drive
Input power:	39 kW
Output speed:	2,5 rpm
Winch:	Switchable summing gearbox
Input power:	2 x 850 kW
Output speed:	52 rpm

This gearbox is designed for a maximum output torque of 214.000 Nm. In this case two main operation conditions, plus the output shaft bearing coping with the force of the wire drum, are met in one gear unit together with the explosion proof oil lubrication system. The fabricated housing is built for extreme operation temperatures from -56°C to +60°C. These special designed gear unit weighing 9 tons is a guarantee for a long lifetime and reliable function even under extreme conditions.

